



Transition period in evaluation of study programmes / fields

Eimantė Bogdan

Acting Head of Study Programmes Evaluation Department

2018 11 05

Study programmes evaluation (current model)

- All study programmes must be evaluated at least once every 6 years;
- I & II cycle study programmes, non-degree programmes – evaluation by SKVC;
- III cycle studies – evaluation by Science Council of Lithuania;
- External evaluation can be organized by SKVC or any other agency registered on EQAR.

Study programmes evaluation (current model)

- The study programme evaluation is positive or negative;
- Evaluation is carried out by national or international expert teams;
- The decision on study programme accreditation is based on external evaluation report.

A study programme can be accredited for:

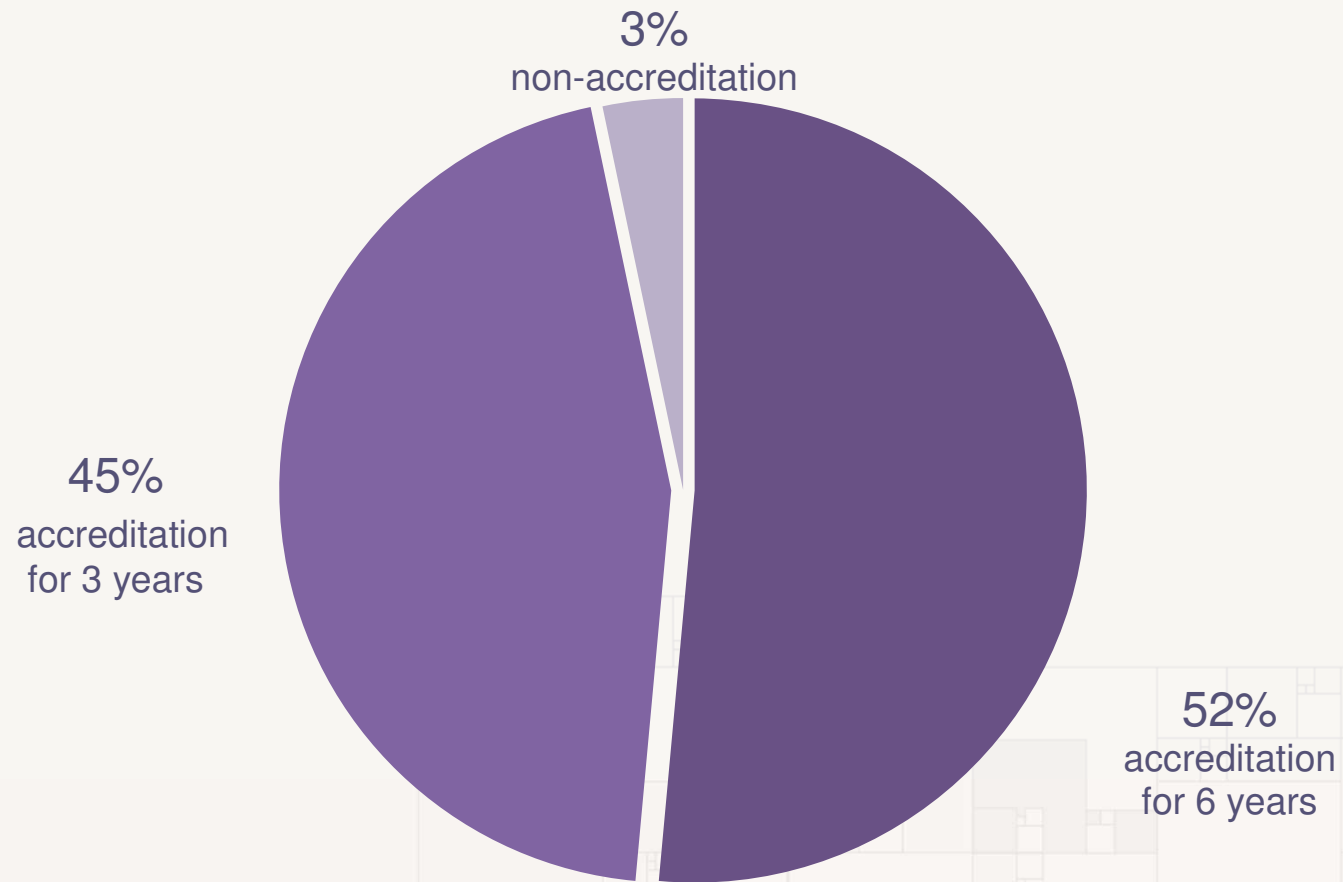
- 6 years;
- 3 years.

The programme can be given non-accreditation!

Study programmes' evaluation areas (current model)

Evaluation area	Points (1 – unsatisfactory.... 4- very good)
Programme aims and learning outcomes	
Curriculum design	
Teaching staff	
Facilities and learning resources	
Study process and students' performance assessment	
Programme management	
TOTAL	

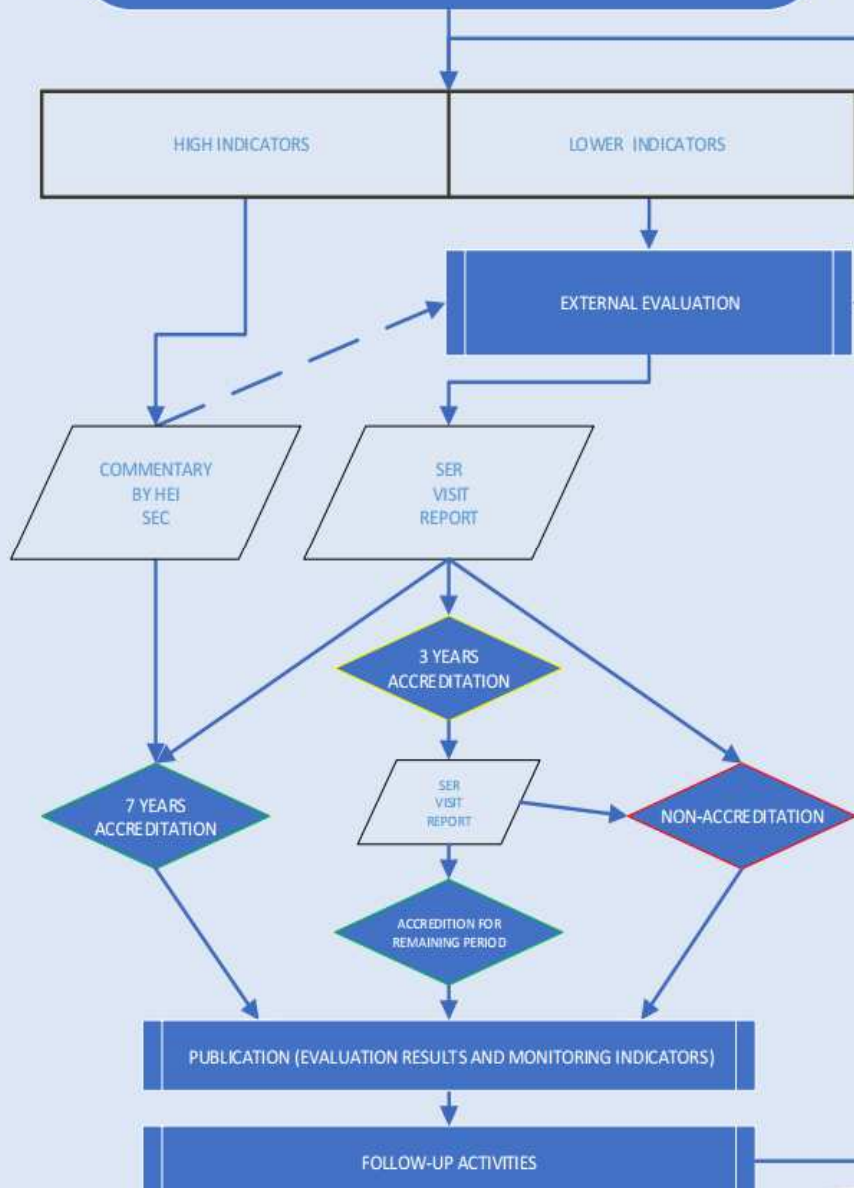
2010-2017 evaluation results of study programmes



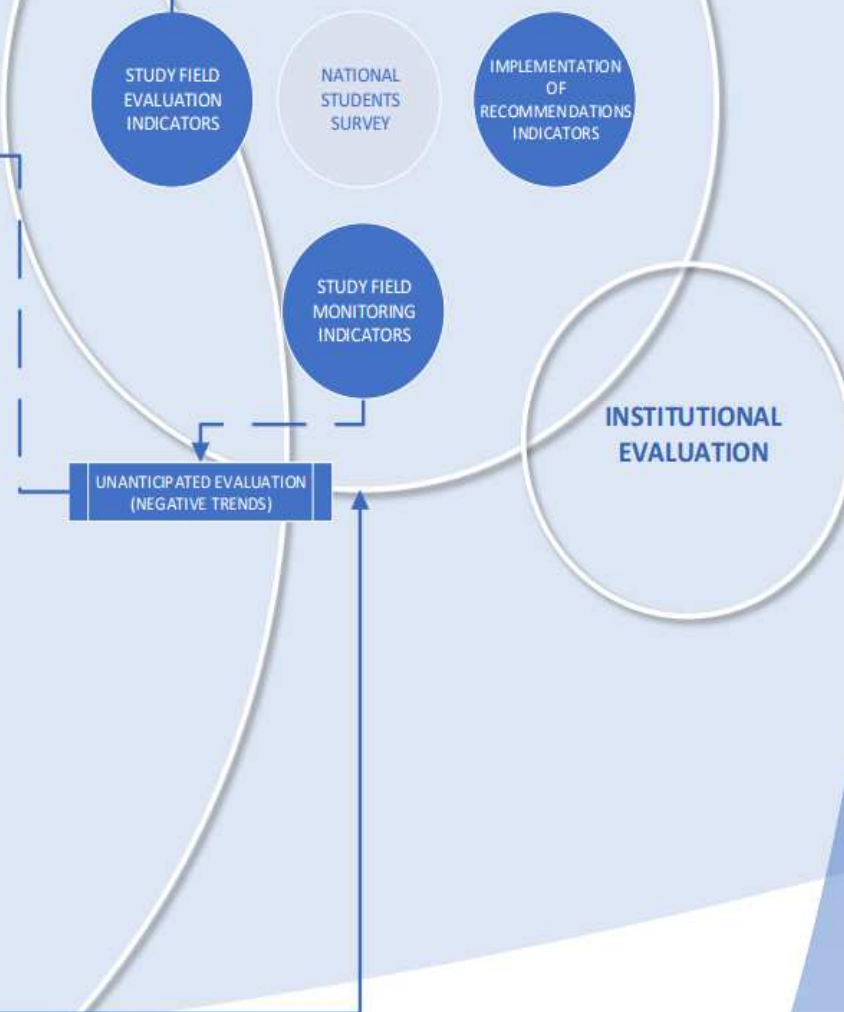
New model

- Systematic evaluation (national context), evaluation of all study fields in all Lithuanian Higher Education Institutions at once;
- Not so many evaluations – less expenses;
- Data and other information is used from various registers and state databases;
- Trust based evaluation for those meeting high indicators;
- More attention to follow-up activities
- Annual monitoring.

EVALUATION OF A STUDY FIELD



MONITORING



THANK YOU!